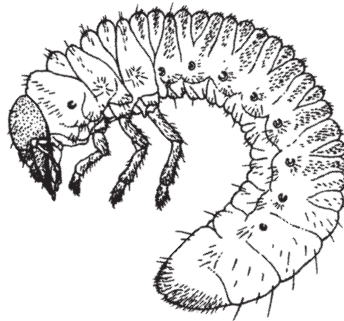
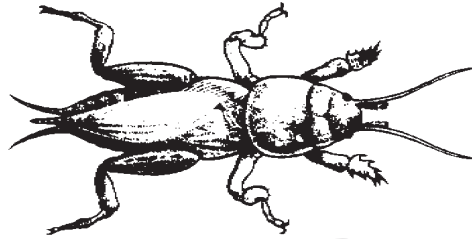


SOUTHERN INSECT TAG



GRUBS AWAY

IMIDACLOPRID 0.5 G

FOR SYSTEMIC INSECT CONTROL IN TURFGRASS AND LANDSCAPE ORNAMENTALS

TREATS UP TO 6,400 SQ. FT.



ACTIVE INGREDIENT

Imidacloprid, 1-[(6-Chloro-3-pyridinyl)methyl]

-N-nitro-2-imidazolidinimine 0.5%

OTHER INGREDIENTS 99.5%

TOTAL 100.0%

KEEP OUT OF REACH OF CHILDREN

CAUTION

FIRST AID

If swallowed: Call a poison control center or doctor immediately for treatment advice. Have person sip a glass of water if able to swallow. Do not induce vomiting unless told to do so by a poison control center or doctor. Do not give anything by mouth to an unconscious person.

If on skin or clothing: Take off contaminated clothing. Rinse skin immediately with plenty of water for 15 to 20 minutes. Call a poison control center or doctor for treatment advice.

If in eyes: Hold eye open and rinse slowly and gently with water for 15 to 20 minutes. Remove contact lenses, if present, after the first 5 minutes, then continue rinsing eye. Call a poison control center or doctor for treatment advice.

In case of emergency call your local poison control center for assistance. Have a product container or label with you when calling a poison control center or doctor, or going for treatment.

Note To Physician: No specific antidote is available. Treat the patient symptomatically.

PRECAUTIONARY STATEMENTS

HAZARDS TO HUMANS AND DOMESTIC ANIMALS

CAUTION Harmful if swallowed or absorbed through skin. Causes eye irritation. Avoid contact with skin, eyes, or clothing. Wash thoroughly with soap and water after handling.

ENVIRONMENTAL HAZARDS

Do not apply directly to water, areas where surface water is present or to intertidal areas below the mean high water mark. Do not contaminate water when disposing of equipment washwaters.

This product is highly toxic to bees exposed to direct treatment or residues on blooming crops or weeds. Do not apply this product or allow it to drift to blooming crops or weeds if bees are visiting the treatment area. This product is toxic to wildlife and highly toxic to aquatic invertebrates.

This chemical demonstrates the properties and characteristics associated with chemicals detected in ground water. The use of this chemical in areas where soils are permeable, particularly where the water table is shallow, may result in groundwater contamination.

DIRECTIONS FOR USE

It is a violation of Federal law to use this product in a manner inconsistent with its labeling. Do not formulate this product into other end-use products.

STORAGE AND DISPOSAL

Do not contaminate water, food, or feed by storage or disposal. Open dumping is prohibited.

Pesticide Storage: Store in a cool, dry place and in such a manner as to prevent cross contamination with other pesticides, fertilizers, food, or feed.

Store in original containers and out of the reach of children, preferably in a locked storage area. Handle and open container in a manner as to prevent spillage.

Pesticide Disposal: Wastes resulting from the use of this product may be disposed of on site or at an approved waste disposal facility. Improper disposal of excess pesticide is a violation of Federal law.

Container Disposal: Nonrefillable containers. Do not reuse or refill this container. Do not use container in connection with food, feed, or drinking water. Dispose of empty container in a sanitary landfill, or by incineration, or if allowed by state and local authorities by burning. If burned, stay out of smoke.

If the container is leaking or material is spilled for any reason or cause, carefully sweep material into a pile. Refer to Precautionary Statements on label for hazards associated with the handling of this material. Do not walk through spilled material.

Dispose of as directed for pesticides above, or apply uncontaminated product according to the Directions for Use. Keep unauthorized people away.

FOR CHEMICAL EMERGENCY: Spill, leak, fire, exposure, or accident, call CHEMTREC at 1-800-424-9300

INFORMATION

APPLICATION TO TURFGRASS

GRUBS AWAY can be used for the control of the following listed soil inhabiting pests of turfgrass: Northern & Southern masked chafers, *Cyclocephala borealis*, *C. immaculata*, and/or *C. lurida*; Asiatic garden beetle, *Maladera castanea*; European chafer, *Rhizotrogus majalis*; Green June beetle, *Cotinis nitida*; May or June beetles, *Phyllophaga* spp.; Japanese beetle, *Popillia japonica*; Oriental beetle, *Anomala orientalis*; Billbugs, *Spherophorus* spp.; Annual bluegrass weevil, *Hyperodes* spp.; Black turfgrass ataenius, *Ataenius spretulus*; *Aphodius* spp; European Crane Fly *Tipula paludosa*; and Mole crickets, *Scapteriscus* spp. GRUBS AWAY can also be used for the suppression of cutworms and chinchbugs in turfgrass areas. Use GRUBS AWAY as directed in sites such as home lawns, business and office complexes, shopping complexes, multi-family residential complexes, golf courses, airports, cemeteries, parks, playgrounds, and athletic fields.

The active ingredient in GRUBS AWAY has sufficient residual activity so that applications can be made preceding the egg laying activity of the target pests. High levels of control can be achieved when applications are made preceding or during the egg laying period. The need for an application can be based on historical monitoring of the site, previous records or experiences, current season adult trapping or other methods. Optimum control will be achieved when applications are made prior to egg hatch of the target pest, followed by sufficient irrigation or rainfall to move the active ingredient through the thatch. Do not make applications when turfgrass areas are waterlogged or the soil is saturated with water. Adequate distribution of the active ingredient cannot be achieved when these conditions exist. The treated turf must be in such a condition that the rainfall or irrigation will penetrate vertically in the soil profile.

Restrictions: * Do not use GRUBS AWAY on commercial sod farms.
* Do not apply more than 80 lb (0.4 lb of active ingredient) per acre per year.

APPLICATION TO ORNAMENTALS

Apply GRUBS AWAY as a broadcast application on ornamentals in commercial and residential landscapes. GRUBS AWAY is a systemic product and will be translocated upward within the plant system. Optimum control will be achieved when applications are followed by sufficient mechanical incorporation, irrigation or rainfall to move the active ingredient into the soil. Make applications prior to anticipated pest infestation to achieve optimum levels of control.

Note: GRUBS AWAY can be used on plants intended for aesthetic purposes or climatic modification and being grown in interior plantscapes, ornamental gardens or parks, or on golf courses or lawns and grounds.

Restrictions: * Do not use on commercial greenhouses, nurseries, on sod farms or on grass grown for seed.
* Do not apply more than 80 lb (0.4 lb of active ingredient) per acre per year.

APPLICATION EQUIPMENT

Apply GRUBS AWAY uniformly over the area being treated with normally used granular application equipment. Both drop-type and rotary-type spreaders may be used to apply GRUBS AWAY. Do not use spreaders which would apply the material in concentrated bands. Calibrate application equipment prior to use according to the manufacturer's directions. Check frequently to be sure equipment is working properly and distributing granules uniformly and accurately.

APPLICATIONS FOR USE ON TURFGRASS

CROP:	PEST	DOSAGE	GRUBS AWAY:
Turfgrasses	Larvae of:	European Crane Fly	60 to 80 lb per acre or 1.4 to 1.8 lb per 1000 sq ft
	Annual bluegrass weevil	Green June beetle	
	Asiatic garden beetle	Japanese beetle	
	Billbugs	Northern masked chafer	
	Black turfgrass ataenius	Oriental beetle	
	Cutworms (suppression)	Phyllophaga spp.	
Chinch bug (suppression)	European chafer	Southern masked chafer	80 lb per acre or 1.8 lb per 1000 sq ft
	Mole crickets		

Application Instructions: Apply as a broadcast application. For optimum control of grubs, billbugs, European crane fly and annual bluegrass weevil, apply as a broadcast application prior to egg hatch of the target pest.

Be sure to read "APPLICATION EQUIPMENT" and "SPREADER SETTINGS for GRUBS AWAY" sections of this label.

For suppression of chinchbugs, broadcast apply prior to the hatching of the first instar nymphs.

For control of mole crickets make application prior to or during the peak egg hatch period. GRUBS AWAY is not effective against mole crickets if adult or large nymphs are present and actively tunneling. For large nymphs or actively tunneling mole crickets a remedial insecticide must be used.

Consult your local State Agricultural Experiment Station, or State Extension Turf Specialists for more specific information regarding timing of application.

Follow with irrigation or rainfall within 24 hours after application to move the active ingredient through the thatch. On golf courses, irrigate treated areas following application. Do not mow turf or lawn area until after irrigation or rainfall has occurred so that uniformity of application will not be affected.

RESTRICTIONS: Do not apply more than 80 lb (0.4 lb of active ingredient) per acre per year.

APPLICATIONS FOR USE ON ORNAMENTALS

For use only in and around industrial and commercial buildings and on residential areas.

CROP	PEST	DOSAGE GRUBS AWAY
Landscape Plantings (including trees, shrubs, evergreens, flowers, foliage plants, and ground covers)	White grub larvae (such as Japanese beetle larvae, Chafers, <i>Phyllophaga</i> spp. Asiatic garden beetle, Oriental beetle)	1.4 to 1.8 lb per 1,000 sq ft

Apply as a broadcast treatment. Prior to application, remove black plastic or other weed barrier material that will not permit water permeability.

Follow with irrigation or rainfall within 24 hours after application to move the active ingredient into the soil. Be sure to read the Section on APPLICATION EQUIPMENT.

RESTRICTIONS: Do not apply more than 80 lb (0.4 lb of active ingredient) per acre per year.

SPREADER SETTINGS for GRUBS AWAY

The following chart can be used as a guide in establishing an accurate rate of GRUBS AWAY. Application rates will vary depending upon speed, equipment wear and condition of spreader. Carefully calibrate application equipment prior to commercial use of this product.

SPREADER	SPEED (m.p.h.)	SETTINGS	
		60 lb/A	80 lb/A
Cyclone Model CB4000	3	3-1/4	3-1/2
Earthway Drop	3	9	10
Earthway 10' Rotary	3	11	12
Gandy Turf Tender 24"	3	16	19
Gandy Turf Tender 42"	3	21	23
Lely	4.5	3.5	-
Lesco Model 6000	3	B 1/2	C
PSB Prizelawn CBR-II	3	3-1/4	3-1/2
Scott's Proturf R-8A	3	H	I
Scott's Proturf SR-1	3	H	I
Scott's PF-1, PF-2, PF-3, PF-4 Drop	3	4	4-1/2
Scott's SS-1 Drop	3	4	4-1/2
Spyker Model 34	3	3.1	3.2
Vicon Model PS-203	4.5	13	16

Do not allow runoff or puddling of irrigation water following application. Do not apply GRUBS AWAY to areas that are waterlogged or saturated, which will not allow penetration into the root zone of the plant.

CONDITIONS OF SALE AND LIMITATION OF WARRANTY AND LIABILITY

NOTICE: Read the entire Directions for Use and Conditions of Sale and Limitation of Warranty and Liability before buying or using this product. If the terms are not acceptable, return the product at once, unopened and the purchase price will be refunded.

The Directions for Use of this product must be followed carefully. It is impossible to eliminate all risks inherently associated with the use of this product. Crop injury, ineffectiveness or other unintended consequences may result because of such factors as manner of use or application, weather or crop conditions, presence of other materials or other influencing factors in the use of the product, which are beyond the control of Southern Agricultural Insecticides, Inc. or Seller. All such risks shall be assumed by Buyer and User, and Buyer and User agree to hold Southern Agricultural Insecticides, Inc. and Seller harmless for any claims relating to such factors.

Southern Agricultural Insecticides, Inc. warrants that this product conforms to the chemical description on the label and is reasonably fit for the purposes stated in the Directions for Use, subject to the inherent risks referred to above, when used in accordance with directions under normal use conditions. This warranty does not extend to the use of the product contrary to label instructions, or under abnormal conditions or under conditions not reasonably foreseeable to or beyond the control of Seller or Southern Agricultural Insecticides, Inc. and Buyer and User assume the risk of any such use. **TO THE EXTENT CONSISTENT WITH APPLICABLE LAW SOUTHERN AGRICULTURAL INSECTICIDES, INC. MAKES NO WARRANTIES OF MERCHANTABILITY OR OF FITNESS FOR A PARTICULAR PURPOSE NOR ANY OTHER EXPRESS OR IMPLIED WARRANTY EXCEPT AS STATED ABOVE.**

To the extent consistent with applicable law in no event shall Southern Agricultural Insecticides, Inc. or Seller be liable for any incidental, consequential or special damages resulting from the use or handling of this product. **TO THE EXTENT CONSISTENT WITH APPLICABLE LAW THE EXCLUSIVE REMEDY OF THE USER OR BUYER, AND THE EXCLUSIVE LIABILITY OF SOUTHERN AGRICULTURAL INSECTICIDES, INC. AND SELLER FOR ANY AND ALL CLAIMS, LOSSES, INJURIES OR DAMAGES (INCLUDING CLAIMS BASED ON BREACH OF WARRANTY, CONTRACT, NEGLIGENCE, TORT, STRICT LIABILITY OR OTHERWISE) RESULTING FROM THE USE OR HANDLING OF THIS PRODUCT, SHALL BE THE RETURN OF THE PURCHASE PRICE OF THE PRODUCT OR, AT THE ELECTION OF SOUTHERN AGRICULTURAL INSECTICIDES, INC. OR SELLER, THE REPLACEMENT OF THE PRODUCT.**

Southern Agricultural Insecticides, Inc. and Seller offer this product, and Buyer and User accept it, subject to the foregoing conditions of sale and limitations of warranty and of liability, which may not be modified except by written agreement signed by a duly authorized representative of Southern Agricultural Insecticides, Inc.

Distributed By: **Southern Agricultural Insecticides, Inc.**
Palmetto, FL 34220 Hendersonville, NC 28793 Boone, NC 28607
EPA Reg. No. 83100-14-829 J3 EPA EST. NO 829-FL-1

Net Weight:
9 lb. (4.08 kg)

