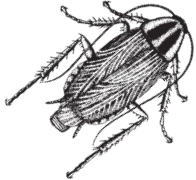


**S A SOUTHERN  
5 0 AG®**



# **BORIC ACID**

## **ROACH POWDER**

### **KILLS ROACHES, ANTS AND SILVERFISH**

**ACTIVE INGREDIENT:**

Boric Acid .....100.0%

**KEEP OUT OF REACH OF CHILDREN CAUTION**  
**Read Entire Label Before Using This Product**

**FIRST AID**

**IF SWALLOWED:** • Call a poison control center or doctor immediately for treatment advice. • Have person sip a glass of water if able to swallow. • Do not induce vomiting unless told to do so by a poison control center or doctor. • Do not give anything by mouth to an unconscious or convulsing person.

**IF IN EYES:** • Hold eye open and rinse slowly and gently with water for 15 to 20 minutes. • Remove contact lenses, if present, after the first 5 minutes, then continue rinsing eye. • Call a poison control center or doctor for treatment advice.

**IF ON SKIN or CLOTHING:** • Take off contaminated clothing. • Rinse skin immediately with plenty of water for 15 to 20 minutes. • Call a poison control center or doctor for treatment advice.

Have the product container or label with you when calling a poison control center or doctor or going for treatment. You may also call CHEMTREC at 800-424-9300 for emergency medical treatment information.

Distributed by:

**Southern Agricultural Insecticides, Inc.**

P.O. Box 218, Palmetto, FL 34220

EPA Reg. No. 19713-20206-829 EPA EST. NO. 829-FL-1

J6

**Net Weight: 3 lb. (1.36 kg)**

**PRECAUTIONARY STATEMENTS**

**HAZARDS TO HUMANS AND DOMESTIC ANIMALS**

**CAUTION:** Harmful if swallowed or absorbed through the skin. Causes eye irritation. Avoid contact with skin, eyes or clothing. Wash thoroughly with soap and water after handling.

**PERSONAL PROTECTIVE EQUIPMENT (PPE)**

Wear long-sleeved shirt, long pants and shoes plus socks.

**ENVIRONMENTAL HAZARDS**

Do not discharge effluent containing this product into lakes, streams, ponds, estuaries, oceans or other waters unless in accordance with the requirements of a National Pollutant Discharge Elimination System (NPDES) permit and the permitting authority has been notified in writing prior to discharge. Do not discharge effluent containing this product to sewer systems without previously notifying the local sewage treatment plant authority. For guidance, contact your State Water Board of Regional Office of the EPA.

**USE RESTRICTIONS**

Children and pets should not be in treatment area until after application is completed. Do not treat pets with this product. Avoid contamination of feed and foodstuffs. Avoid contamination of ornamental plants.

**DIRECTIONS FOR USE**

It is a violation of federal law to use this product in a manner inconsistent with its labeling.

Do not apply this product in a way that will contact workers or other persons, either directly or through drift. Only protected handlers may be in the area during application. For any requirements specific to your State or Tribe, consult the agency responsible for pesticide regulation.

**USE INSTRUCTIONS**

**To control Cockroaches (also known as Palmetto Bugs), Ants and Silverfish:** Apply liberally, scattering under and behind refrigerator, stove, sink, dishwasher, washing machine and dryer, tubs, into openings around drains, water pipes, and electrical conduits and in cracks and crevices along baseboards and corners of cabinets, cupboards and closets

Remove all lower drawers in kitchen and bathroom cabinets, bedroom dressers and chests of drawers, then scatter liberally in drawer wells. Reapply as necessary. Any powder visible after application must be brushed into cracks and crevices or removed. Apply only in areas inaccessible to children and pets. Avoid contamination of feed and foodstuffs.

**Directions for applying as a mop solution to control cockroaches:** Add 1 cup of powder to each gallon of rinse water. Apply to floor areas only. Make only enough for each application. Supplemental treatment only.

- Use of this product for the control of bed bugs is prohibited.
- Applications to carpets are prohibited.

(Directions for Use Continued)

**(Directions for Use Continued)**

This product may be used in homes, restaurants and other food and feed handling establishments, markets, schools, warehouses, factories, offices, hotels, motels, hospitals, nursing homes, garages, grocery stores, apartment buildings, industrial plants, theaters, ships, boats, trains, trucks, yachts, camps, mobile homes, busses, zoos, kennels, military bases, libraries, utilities and sewers.

**CRACK AND CREVICE TREATMENT**

**Food and Feed Handling Establishments:** Places other than private residences in which food or feed is held, processed, prepared or served.

**Food Area Application Limited to Crack and Crevice Treatment Only:** Includes areas for receiving, storage, packing (canning, bottling, wrapping, boxing), preparing, edible waste storage and enclosed processing systems (mills, dairies, edible oils, syrups). Serving Areas (when food is exposed and facility is in operation) also would be considered a food area. Apply in small amounts directly into cracks and crevices using a bulbous duster or other suitable equipment capable of applying insecticide directly into cracks and crevices, between equipment and floors, openings leading to voids and hollow spaces in walls, equipment legs and bases, conduits, motor housing and electrical switch boxes where cockroaches hide. Care should be taken to avoid depositing the product onto exposed surfaces or introducing the material into the air. Avoid contamination of food or food processing surfaces.

Application of this product in the food areas of food handling establishments, other than as a crack and crevice treatment are not permitted.

**Serving Areas:** Facilities where prepared foods are served, such as dining rooms, but excluding areas where food may be prepared or held. Apply as a spot treatment to selective surfaces such as baseboards, under elements of construction into cracks and crevices. Avoid treating surfaces likely to be contacted by food. Do not apply when facility is in operation or foods are exposed.

**Non-Food Areas:** Include garbage rooms, lavatories, floor drains (to sewer and vestibules), offices, locker rooms, machine rooms, boiler rooms, garages, mop closets and storage (after canning or bottling). Apply to baseboard areas, around water pipes, surfaces behind and beneath sinks, lockers, tables, pallets and similar areas where insects hide or through which they may enter.

**STORAGE AND DISPOSAL**

Do not contaminate water, food, or feed by storage or disposal.

**PESTICIDE STORAGE:** Store in a dry place. Do not store where children or animals may gain access.

**PESTICIDE DISPOSAL:** Nonrefillable container. Do not reuse or refill this container. Offer for recycling, if available. Dispose of empty container in a sanitary landfill or by incineration, or, if allowed by State and local authorities, by burning. If burned, stay out of smoke.

**For Residential/Household Use**

**PESTICIDE DISPOSAL:** Call your local solid waste agency for disposal instructions. Never place unused product down any indoor or outdoor drain.

**CONTAINER DISPOSAL:** Nonrefillable container. Do not reuse or refill this container. **If Empty,** place in trash or offer for recycling if available. **If partially filled,** call your local solid waste agency for disposal instructions. Never place unused product down any indoor or outdoor drain.

**WARRANTY-CONDITION OF SALE:** OUR DIRECTIONS FOR USE of this product are based upon tests believed reliable. Follow directions carefully. Timing and method of application, weather and crop conditions, mixture with other chemicals not specifically recommended, and other influencing factors in the use of this product are beyond the control of the Seller. To the extent consistent with applicable law, Buyer assumes all risks of use, storage and handling of this material not in strict accordance with directions given herewith. To the extent consistent with applicable law, in no case shall the manufacturer or the Seller be liable for consequential, special or indirect damages resulting from the use or handling of this product when such use and/or handling is not in strict accordance with directions given herewith. The foregoing is a condition of sale by Southern Agricultural Insecticides, Inc. and is accepted as such by the Buyer.

Lot No.

