

SOLUBLE OIL SPRAY

SUPERIOR 70-SECOND TYPE

**FOR USE ON WOODY ORNAMENTALS,
CITRUS, APPLES, AND PALM TREES TO
CONTROL WHITE FLIES, SCALE, MEALY
BUGS, AND OTHER LISTED INSECTS**

ACTIVE INGREDIENT

Petroleum oil98.00%
(Un sulfonated residue not less than 92%)

INERT INGREDIENTS: 2.00%

TOTAL:100.00%

The oil in this product meets Florida Citrus Standards FC 435.66

KEEP OUT OF REACH OF CHILDREN CAUTION

EPA Reg. No. 829-83
EPA Est. No. 829-FL-1

PRECAUTIONARY STATEMENTS

HAZARDS TO HUMANS AND DOMESTIC ANIMALS CAUTION:

Harmful if swallowed. May cause skin irritation.

PERSONAL PROTECTIVE EQUIPMENT

Some material that are chemical-resistant to this product are listed below. If you want more options follow the instructions for Category E on an EPA chemical resistance category selection chart. Applicators and other handlers must wear:

1. Long-sleeved shirt and long pants
2. Chemical resistant gloves, such as barrier laminate, nitrile rubber, neoprene rubber, or viton.
3. Shoes plus socks

Follow manufacturer's instructions for cleaning and maintaining PPE. It no such instructions for washables, use detergent and hot water. Keep and wash PPE separately from other laundry.

USER SAFETY RECOMMENDATIONS

Wash hands before eating, drinking, chewing gum, using tobacco or using the toilet.

ENVIRONMENTAL HAZARDS

This product is toxic to fish. Do not apply directly to water. Do not contaminate water by cleaning of equipment or disposal of washwaters. Apply this product only as specified on the label.

DIRECTIONS FOR USE

It is a violation of Federal law to use this product in a manner inconsistent with its labeling. **Note:** Do not apply this product through any type of Irrigation System. Do not apply this product in a way that will contact workers or other persons, either directly or through drift. Only protected handlers may be in the area during application. For any requirements specific to your State or Tribe, consult the agency responsible for pesticide regulation.

AGRICULTURAL USE REQUIREMENTS

Use this product only in accordance with its labeling and with the Worker Protection Standard, 40 CFR Part 170. This Standard contains requirements for the protection of agricultural workers on farms, forests, nurseries, and greenhouses and handlers of agricultural pesticides. It contains requirements for training, decontamination, notification, and emergency assistance. It also contains specific instructions and exceptions pertaining to the statements on this labeling about personal protective equipment (PPE), restricted-entry intervals. The requirements in this box only apply to uses of this product that are covered by the Worker Protection Standard. Do not enter or allow worker entry into treated areas during the restricted entry interval (REI) of 12 hours. PPE required for early entry to treated areas that is permitted under the Worker Protection Standard and that involves contact with anything that has been treated, such as plants, soil, or water, is: (1) Coveralls, (2) Chemical-resistant gloves, such as Barrier laminate, or Nitrile Rubber, or Neoprene Rubber, or Viton, and (3) Shoes plus Socks.

NON-AGRICULTURAL USE REQUIREMENTS

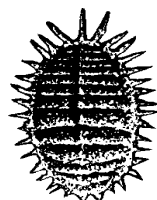
The requirements in this box apply to uses of this product that are NOT within the scope of the Worker Protection Standard for agricultural pesticides (40 CFR Part 170). The WPS applies when this product is used to produce agricultural plants on farms, forests, nurseries, or greenhouses. Keep children and pets off treated area until spray has dried.

GENERAL INFORMATION

Mix thoroughly the proper amount of oil and water in the spray tank and continue agitation during spraying. Do not allow the mixture to stand. For scale to be effective, thorough coverage is essential. Better scale control can be anticipated when applications are made when scale insects are in the crawler stage.

USE PRECAUTIONS

In general, woody ornamentals are more tolerant to oil sprays than tender succulent plants. If oil applications must be made to tender plants, they may be syringed off with clear water about an hour after applying oil. Do not apply oil sprays to plants that are wilting or are near wilting from lack of moisture. Do not apply oil with sulfur or lime sulfur. Do not apply an oil spray within 3 weeks before or after an application of sulfur or lime sulfur. Avoid spraying during periods of excessively high temperature (above 90°F). Do not exceed three oil sprayings per year. Do not use more than the suggested dosage, for to do so may cause plant injury.



NON-DORMANT USES

SUGGESTIONS FOR USE WHEN PLANT IS ACTIVELY GROWING

This includes all suggested Florida uses as well as suggested uses on actively growing plants (non-dormant) in other Southeastern areas. Do not apply in Florida after October 1st. Do not use when temperatures fall below 42°F within 3 weeks of application. If second application of oil is necessary, do not apply within six weeks after first oil spray. Avoid spraying open blooms.

PLANT	INSECT	Qts. per Tbls. per		
		100 Gal.	Gallon	
Avocado	Wax Scale, White Fly, Latania Scale	5	3 1/2	Preferably in May, June or July.
Azaleas	Azalea Lace Bug, White Fly Larva	5	3 1/2	2 applications after blooming period.
Camellia	Scales, White Fly Larva, Citrus Mealy Bug, Soft Scales	5	3 1/2	2 applications at close of blooming period.
Citrus	Florida Red Scale, Purple Scale, Spider Mite, White Fly Larvae.	5	4	Preferably in June or July.
Crotons	Soft Scales, Meaty Bug	4	2	2 applications, if needed.
Gardenia	White Fly Larvae, Soft Scales, Citrus Mealy Bug	5	3 1/2	2 applications preferably after blooming period.
Holly	White Fly Larvae	5	3 1/2	2 applications.
Hibiscus	White Fly Larvae	4	2	2nd application only if needed.
Ixora	Soft Scales, Mealy Bug	5	4	2 applications as needed, preferably after blooming.
Ivy	Oleander Scale	2	1	Avoid 2nd application. Preferably spring or fall.
Ligustrum	White Fly Larva Soft Scales	5	3 1/2	2nd applications as needed.
Mango	Florida Red Scale, Mango Scale	5	3 1/2	2nd application only if needed.
Palm, outdoor	Soft Scales, Mealy Bug	3	2	Rinse with clear water 1 1/2 to 2 hours after applying.
Pittosporum	Cottony Cushion Scale	5	3	2 applications as needed.
Viburnum	Soft Scale	5	3	2 applications as needed.

DORMANT USES

Dormant oil sprays are applied during the winter and early spring in those areas where many plants reach true dormancy (not Peninsular Florida). Dormant oil sprays should not be applied in freezing weather. Preferably, temperatures should be above 40°F. Dormant sprays are generally more effective in the spring just before new growth starts.

PLANT	INSECT	Qts. per Tbls. per		
		100 Gal.	Gallon	
Apples	Scales	8	6	Before visible growth starts.
Azalea	Bark Scales	6	4	On early blooming varieties, apply during warm weather in late fall.
Camellia	Scales	6	4	Supplement to summer applications.
Holly	Holly Scale	8	6	In spring before buds open.
Pittosporum	Cottony Cushion Scale	8	6	2 applications.
Privet	White Peach Scale	12	8	2 applications 2 weeks apart.
Pyracantha	Wax Scale	12	8	Before visible growth starts.
Rose	Rose Scale	6	4	Before visible growth starts.

AS A PLANT SHINE

For many slick leaved hardy house plants. Spray or wipe with a soft cloth or sponge using 2 tablespoonfuls per gallon of water.

STORAGE AND DISPOSAL

Do not contaminate water, food, or feed by storage or disposal.

PESTICIDE STORAGE: Store pesticide in the original container in a locked storage area.

PESTICIDE DISPOSAL (Household only): Securely wrap original container in several layers of newspaper and discard in trash.

PESTICIDE DISPOSAL: Wastes resulting from the use of this product may be disposed of on site or at an approved waste disposal facility.

CONTAINER DISPOSAL (Household only): Do not reuse container Rinse thoroughly before discarding in trash.

CONTAINER DISPOSAL: Triple rinse (or equivalent), then offer for recycling or reconditioning, or puncture and dispose of in a sanitary landfill, or by other procedures approved by state and local authorities.

WARRANTY STATEMENT

Follow instructions carefully. Timing, method of application, weather conditions, mixtures with other chemicals and other influencing factors in the use of this product are beyond control of the seller. Buyer assumes all risks of use, storage, or handling not in strict accordance with the directions and precautions given herewith.

Southern Agricultural Insecticides, Inc.

Wetumpka, FL 34220

Wetumpka, NC 28793

Boone, NC 28607

1-800-998-9988