

S A SOUTHERN
50 AG®

*Kills the
Mound*

PAYBACK Fire Ant Bait

Dead Ants in 24 Hours

Controls Fire Ants/Harvester Ants for up to 2 Months

OUTDOOR USE ONLY

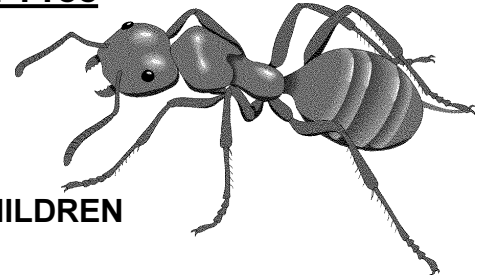
READY TO USE

Contains Conserve* Insecticide

Odor-Free

Active Ingredient
spinosad (a mixture of
spinosyn A & spinosyn D) 0.015%
Other Ingredients 99.985%
Total 100.000%

*Trademark of Dow Agrosiences LLC.



**KEEP OUT OF REACH OF CHILDREN
CAUTION**

PRECAUTIONARY STATEMENTS HAZARDS TO HUMANS AND DOMESTIC ANIMALS

Harmful if swallowed. Wash hands before eating, drinking, chewing gum, using tobacco or using the toilet. Wash thoroughly with soap and water after handling.

FIRST AID

If Swallowed: Call a poison control center or doctor immediately for treatment advice. Have person sip a glass of water if able to swallow. Do not induce vomiting unless told to by a poison control center or doctor.
Have the product container or label with you when calling a poison control center or doctor or going for treatment

ENVIRONMENTAL HAZARDS

This product is toxic to aquatic invertebrates. To protect the environment, do not allow pesticide to enter or run off into storm drains, drainage ditches, gutters or surface waters. Applying this product in calm weather when rain is not predicted for the next 24 hours will help to ensure that wind or rain does not blow or wash pesticide off the treatment area. Sweeping any product that lands on a driveway, sidewalk, or street, back onto the treated area of the lawn or garden will help to prevent runoff to water bodies or drainage systems.

DIRECTIONS FOR USE

It is a violation of Federal law to use this product in a manner inconsistent with its labeling. Read all Directions for Use carefully before applying.

STORAGE AND DISPOSAL

Do not contaminate water, food, or feed by storage and disposal. **Pesticide Storage:** Store in a cool dry place out of the reach of children and domestic animals.

Store in original container only. **Container Handling:** Nonrefillable container. Do not reuse or refill this container.

If empty: Place in trash or offer for recycling if available.

If partly filled: Call your local solid waste agency or 1-800-992-5994 for disposal instructions. Never place unused product down any indoor or outdoor drain.

HOW IT WORKS

Conserve fire ant bait* is attractive and deadly to fire ants and harvester ants. Ants quickly find and pick up this bait, take it back to the mound, and feed it to the entire colony including the queen(s).

Ants start dying in 24-36 hours with mound/colony destruction in 3 to 14 days. Broadcast applications may take longer.

Fire ant/harvester ant colonies are started by newly mated queen(s) that fly into an area, burrow into the ground and begin laying eggs. Several flights are common during the summer, often shortly after rains. It takes several weeks for new mounds to appear. Combining mound and broadcast applications eliminates/controls visible mounds and helps prevent new mounds from forming.

Distributed by: **Southern Agricultural Insecticides, Inc.**

Palmetto, Fla. 34220 Hendersonville, N.C. 28793

Boone, N.C. 28607

E.P.A. Reg. No. 62719-304-829

EPA EST. NO. 829-FL-1

General Use Precautions and Restrictions

- Avoid mowing 1 day before and after application.
- Do not disturb mounds before, during, or after treatment.
- Do not water in bait.
- Do not water within 6 hours of a mound or 24 hours of a broadcast application.
- If rain occurs within 6 hours of mound application or 24 hours of broadcast application, adequate foraging of the bait may not occur and retreatment may be necessary.
- Do not use kitchen utensils for measuring. Keep measuring utensils with pest control products and away from children.
- Maintain the freshness and attractiveness of the bait by keeping the container tightly sealed in a dark and dry area and using the product within the season of purchase.
- Do not apply to hardscape areas. For outdoor use only. Only for application to gardens and earthen areas around homes.

Where to Apply

- Home lawns
- Perimeter of home
- Around ornamental plants (flowers, shrubs and trees)
- Home gardens
 - asparagus
 - banana and plantain
 - bulb vegetables (including dry bulb onion, garlic, great-headed (elephant) garlic, green onion, leek shallot, and welch onion)
 - bushberries (including blueberry, currant, elderberry, gooseberry, huckleberry, juneberry, lingonberry, and salal)
 - caneberries (including blackberry, black raspberry, loganberry, red raspberry and cultivars and/or hybrids of these.
 - Citrus (including grapefruit, lemons, limes, oranges, and tangerines.
 - cole crops (brassica vegetables) (including broccoli, broccoli raab, Brussels sprouts, cabbage, cauliflower, cavalo, Chinese broccoli, Chinese cabbage (bok choy), Chinese cabbage (napa) Chinese mustard cabbage (gai choy), collards, kale, kohirabi, mizuna, mustard greens mustard spinach and rape greens)
Note: in the state of Georgia, do not apply Payback to : broccoli raab, Chinese cabbage (bok choy), collards, kale, mizuna, mustard greens, mustard spinach, rape greens.
 - cucurbits (including cucumber, edible gourds, muskmelons (cantaloupe, honeydew, etc.) pumpkin, summer and winter squash, and watermelon)
 - fruiting vegetables and okra (including eggplant, ground cherry, okra, pepino, pepper (except black), tomatillo, and tomato)
 - grape
 - herbs (including angelica, balm, basil, borage, burnet, camomile, catnip chervil (dried), Chinese chive, chive, cilantro (leaf), clary, coriander (leaf), curry (leaf) dillweed, horehound, hyssop, lavender, lemongrass, lovage, (leaf), marigold, marjoram, nasturtium, parsley (dried), rosemary, rue, sage, summer savory sweet bay, tansy, tarragon, thyme, wintergreen, winter savory, woodruff and wormwood)

(Where to Apply continued)

- leafy vegetables (including amaranth, arugula, cardoon, celery, celtuce, chervil, Chinese celery, Chinese spinach, corn salad, cress, dandelion, dock, edible-leaved chrysanthemum, endive (escarole), Florence fennel, garden cress, garden purslane, garland chrysanthemum, head and leaf lettuce, leafy amaranth, New Zealand spinach, orach, parsley, radicchio (red chicory), rhubarb, spinach, Swiss chard, tampala, upland cress, vine spinach, watercress, winter cress, winter purslane, and yellow rocket)
- leaves of root and tuber vegetables (including bitter cassava, black salsify, carrot, celeriac (celery root), chicory, dasheen (taro), edible burdock, garden beet, oriental radish (daikon), parsnip, radish, rutabaga, sugar beet, sweet cassava, sweet potato, tanier, true yam, turnip, turnip greens, and turnip rooted chervil)
- peppermint and spearmint
- pome fruits (including apples, crabapples, loquat, pears, and quince)
- potatoes and tuberous and corm vegetables (including arracacha, arrowroot, artichoke, bitter cassava, chayote root, Chinese artichoke, chufa, dasheen, edible canna, ginger, Jerusalem artichoke, leren, potatoes, sweet cassava, sweet potatoes, tanier, true yam, tumeric and yam bean)
- root vegetables (including black salsify, carrot, celeriac, chicory, edible burdock, garden beet, ginseng, horseradish, oriental radish, parsnip, radish, rutabaga, salsify, skirret, Spanish salsify, sugar beet, turnip, turnip-rooted chervil, and turnip-rooted parsley)
- spices (including allspice, anise (seed), annatto (seed), black caraway, caper (buds) caraway, cardamon, cassia (buds), celery (seed), cinnamon, clove (buds), common fennel, coriander (seed), culantro (seed), cunim, dill (seed) Florence fennel, fenugreek, grains of paradise, juniper (berry), lovage (seed), mace, mustard (seed), nutmeg, poppy (seed), saffron, star anise, vanilla, and white pepper)
- stone fruits (including apricots, cherries, nectarines, peaches, plums, and prunes)
- strawberry
- succulent and dry beans and peas (including blackeye pea, chickpea, cowpea, crowder pea, edible-pod pea, English pea, field bean, field pea, garbanzo bean, garden pea, kidney bean, lentil, lima bean, navy bean, pigeon pea, pinto bean, runner bean, snap bean, snow pea, sugar snap pea, and wax bean)
- sweet corn
- tree nuts and pistachio (including almond, beech nut, black walnut, Brazil nut, butternut, cashew, chestnut, English walnut, filbert (hazelnut), hickory nut, macadamia nut, pecan and walnut)
- tropical tree fruits (including acerola, aremoya, avacado, biriba, black sapote, canistel, cherimoya, custard apple, feijoa, guava, ilama, jaboticaba, longan, lychee, mamey sapote, mango, papaya, passionfruit, pulasan, rambutan, sapodilla, sourp, Spanish lime, star apple, starfruit, sugar apple, ti leaves, wax jambu (wax apple) and white sapote)

How to Apply

Mound Application: Sprinkle bait evenly over and around each mound in a 4-ft diameter circle. Apply gently to avoid disturbing ants.

Broadcast Application: Spread bait evenly over the infested area with a hand held or ground driven rotary broadcast spreader

How Much to Apply

Mound Application: Use 4 Tbs. (tablespoons) for each mound. For mounds greater than 15 inches in diameter, use 6 Tbs per mound.

Broadcast Application: Use 1/3 to 2/3 cup for each 1,000 sq. ft., or 3 to 6 cups per 10,000 sq. ft., or 2.5 to 5 lbs. per acre. Use higher rates for heavier infestations, faster activity, and greater overall control.

When to Apply

Apply when ants are active (usually when temperatures are warmer than 60°F). The best time to apply is in the cooler early morning or late evening hours when fire ant and harvester ant foraging is at its peak. Mounds will usually be eliminated or destroyed in 3 to 14 days after treatment. Extremely large mounds may require a repeat application. Make a broadcast application every other month during the warm months to keep fire ants or harvester ants from establishing, starting, or forming new mounds.

Terms and Conditions of Use

to the extent permitted by law, if terms of the following Warranty Disclaimer, Inherent Risks of Use and Limitation of Remedies are not acceptable, return unopened package at once to the seller for a full refund of purchase price paid. Otherwise, use by the buyer or any other user constitutes acceptance of the terms under Warranty Disclaimer and Inherent Risks of User.

Warranty Disclaimer

Seller warrants that this product conforms to the chemical description on the label and is reasonably fit for the purposes stated on the label when used in strict accordance with the directions, subject to the inherent risks set forth below. TO THE EXTENT PERMITTED BY LAW, SELLER MAKES NO EXPRESS NOR IMPLIED WARRANTY OF MERCHANTABILITY OR FITNESS FOR A PARTICULAR PURPOSE OR ANY OTHER EXPRESS OR IMPLIED WARRANTY.

Inherent Risks of Use

It is impossible to eliminate all risks associated with use of this product. Lack of performance, or other unintended consequences may result because of such factors as use of the product contrary to label instructions (including conditions noted on the label, such as unfavorable temperature, soil conditions, etc.), abnormal conditions (such as excessive rainfall, drought, tornadoes, hurricanes), presence of other materials, the manner of application, or other factors, all of which are beyond the control of Seller. All such risks shall be assumed by Buyer.

Limitations of Remedies

To the extent permitted by law, the exclusive remedy for losses or damages resulting from this product (including claims based on contract, negligence, strict liability, or other legal theories), shall be limited to, at Seller's election, one of the following:

1. Refund of purchase price paid by buyer or user for product bought, or
2. Replacement of amount of product used.

Seller shall not be liable for losses or damages.

resulting from handling or use of this product unless Seller is promptly notified of such loss or damage in writing. To the extent permitted by law, in no case shall seller be liable for consequential or incidental damages or losses.

The terms of Warranty Disclaimer, Inherent Risks of Use, and Limitations of Remedies cannot be varied by any written or verbal statements or agreements. No employee or sales agent of the Seller or the seller is authorized to vary or exceed the terms of the Warranty Disclaimer or Limitation of Remedies in any manner.

If any part of this label is missing or for assistance you may contact us via email at info@southernag.com

