

S A SOUTHERN
5 0 AG®

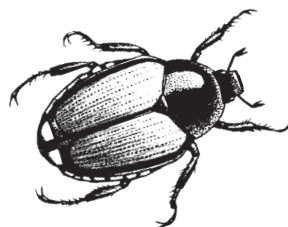
GARDEN INSECT DUST

WITH PERMETHRIN

FOR INDOOR AND OUTDOOR RESIDENTIAL USE ONLY
A BROAD SPECTRUM READY-TO-USE INSECTICIDE
FOR USE ON VEGETABLES AND ORNAMENTAL PLANTS

ACTIVE INGREDIENT:

Permethrin 0.25%
OTHER INGREDIENTS: 99.75 %
Total 100.00%



KEEP OUT OF REACH OF CHILDREN

CAUTION

FIRST AID

If Swallowed: Call a poison control center or doctor immediately for treatment advice. Have person sip a glass of water if able to swallow. Do not induce vomiting unless told to by a poison control center or doctor. Do not give anything by mouth to an unconscious person.

If on Skin or Clothing: Take off contaminated clothing. Rinse skin immediately with plenty of water for 15-20 minutes. Call a poison control center or doctor for treatment advice.

If Inhaled: Move person to fresh air. If not breathing, call 911 or an ambulance, then give artificial respiration, preferable mouth-to-mouth, if possible. Call a poison control center or doctor for further treatment advice.

If in Eyes: Hold eye open and rinse slowly and gently with water for 15-20 minutes. Remove contact lenses, if present, after the first 5 minutes, then continue rinsing eye. Call a poison control center or doctor for treatment advice.

Have the product container or label with you when calling a poison control center or doctor or going for treatment. You may also contact 1-866-767-5089 for emergency medical treatment information.

PRECAUTIONARY STATEMENTS

Hazards to Humans and Domestic Animals

CAUTION: Harmful if inhaled. Avoid breathing dust. Remove contaminated clothing and wash clothing before reuse. Avoid contact with eyes or clothing. Wash thoroughly with soap and water after handling and before eating, drinking, chewing gum, using tobacco or using the toilet. Remove contaminated clothing and wash clothing before reuse.

Environmental Hazards

This product is extremely toxic to aquatic organisms, including fish and invertebrates. To protect the environment, do not allow pesticide to enter or run off into storm drains, drainage ditches, gutters or surface waters. Applying this product in calm weather when rain is not predicted for the next 24 hours will help to ensure that wind or rain does not blow or wash pesticide off the treatment area.

This product is highly toxic to bees exposed to direct treatment on blooming crops or weeds. Do not apply this product or allow it to drift to blooming crops or weeds while bees are actively visiting the treatment area.

Southern Agricultural Insecticides, Inc.

Palmetto, Fla. 34220 Hendersonville, N.C. 28793 Boone, N.C. 28607
E.P.A. Reg. No. 829 -293 J4 EPA Est. No. 829-FL-1, 829-NC-1 (4)

Net Weight: 25 lb. (11.34 kg.)

STORAGE AND DISPOSAL

Do not contaminate water, food, or feed by storage and disposal.

PESTICIDE STORAGE: Store product in original container in a cool, dry, locked place out of reach of children and pets.

PESTICIDE DISPOSAL: If empty: Do not reuse this container. Place in trash or offer for recycling if available. **If partly filled:** Call your local solid waste agency or 1-800-CLEANUP for disposal instructions. Never place unused product down any indoor or outdoor drain.

RESTRICTIONS

Do not allow adults, children, or pets to enter the treated area until dusts have settled. Remove pets, birds, and cover fish aquariums before use.

Do not apply this product in a manner that will contact adults, children, or pets, either directly or through drift. Remove pets, birds, and cover fish aquariums before using.

Do not water the treated area to the point of run off.

Do not make applications during rain.

DIRECTIONS FOR USE

For information on this pesticide product (including health concerns, medical emergencies, or pesticide incidents), call the National Pesticide Telecommunications Network at 1-800-858-7378.

It is a violation of Federal law to use this product in a manner inconsistent with its labeling.

Do not water the treated area to the point of runoff. Do not make applications during rain.

Ornamental Plants - Indoors:

Use a dust applicator such as a shaker can, dust gun, puffer or other bulbous duster, rotary duster or other appropriate duster available.

To protect plants in indoor landscaping - Apply directly on insects to control **leafrollers, armyworms, cutworms** and **cabbageworms** on chrysanthemums and **fungus gnats** on velvet plant.

Dust lightly to cover both upper and lower leaf surfaces with a thin, even film of dust to control **ahpids, armyworms, corn earworms, fall cankerworms, inchworms, Japanese beetles, leafminers, leafrollers, mealybugs, scale crawlers, spring cankerworms, and exposed thrips** on the following plant:

Chrysanthemum	Fuschia	Pansy	Pothos	Velvet plant
Coleus	Gladiolus	Petunia	Prayer plant	Verbena
Crown of thorns	Grape ivy	Philodendron	Purple passion	Zinnia
Cockscomb	Hypoestes	Piggy-back plant	Schefflera	
Draceaena	Ivy	Piperomia	Snapdragon	
Dumbcane	Marigold	Poinsettia	Snake Plant	
English Ivy	Palm	Portulaca	Statice	

If application is made indoors, remove infested plants from living area prior to application. Dust plants in an area not likely to be occupied by children or pets (particularly fish). When dust settles plants can be returned to original location.

Use with care on ferns, palms and fuschia. As with all plants listed above, especially carnations, chrysanthemums and roses, there exists a wide variety of species and cultivars, and therefore, a wide variety of susceptibility to injury. To ascertain possible phytotoxicity, dust a few plants as described above, wait 24 hours and check for possible injury.

Repeat applications may be necessary to control adult Japanese beetles on roses.

Ornamental Plants - Outdoors:

Use a dust applicator such as a shaker can, dust gun, puffer or other bulbous duster or other appropriate duster available. Dust lightly to cover both upper and lower leaf surfaces with a thin, even film of dust. Apply when air is calm to avoid drift and contact with eyes and skin. Start applying at the farthest corner of the treatment area and work backward to avoid contact with dusted surfaces. Allow dust to settle in treated areas before reentering. Contact insects directly whenever possible.

Ornamental Plants Outdoor continued on back

Controls **aphids, cicadas, corn earworms, fall cankerworms, inchworms, leafminers, leafrollers, mealybugs, bagworms** and **exposed thrips** on the following plants:

Ageratum	Gladiolus	Petunia
Arizona Cypress	Gold Bells	Philodendron
Aster	Hypoestes	Poinsettia
Azalea	Ivy	Rhododendron
Begonia	Lilac	Rose
Coleus	Marigold	Snapdragon
Common Ninebark	Mark Orange	Taxus
Common Snowberry	Nannyberry	Wax Plant
Exacum	Palm	Weeping fig
Euonymous	Pansy	Zinnia
English Ivy	Pea Shrub	

May also be used on such plants as camellias, carnations, chrysanthemums, dahlias, delphiniums, dogwoods, fuschia, geraniums, crassula, grapevines (ornamental), laurels, stocks and wandering Jews.

Home Vegetable Gardens:

Use a dust applicator such as a shaker can, dust gun, puffer or other bulbous duster, rotary duster or other appropriate duster available. Dust lightly to cover both upper and lower leaf surfaces with a thin, even film of dust. Apply when air is calm to avoid drift and contact with eyes and skin. Start applying at the farthest corner of the treatment area and work backward to avoid contact with dusted surfaces. Allow dust to settle in treated areas before reentering.

Cole Crops: Broccoli, Brussels Sprouts, Cabbage and Cauliflower - To control beet armyworm, diamond back moth, imported cabbageworm, cabbage aphid, cabbage looper, apply every 5 days as needed. Can be applied up to one day prior to harvest. Do not make more than 10 applications on cabbage and 8 applications on the other cole crops per season.

Corn (Sweet) - To control corn earworms, European corn borers, fall armyworms, southern armyworms, southern armyworms, apply to plants every 5 days as needed. Do not make more than 6 applications per season. Can be applied up to 1 day prior to harvest.

Cucurbits: Balsam pear (bitter melon), Chinese waxgourd (Chinese preserving melon), Citrus melon, cucumber, Gherkin, Edible gourds, Melons including hybrids such as cantaloupe, casaba, crenshaw, honeydew, honeyballs, mango melon, muskmelon, and Persian melon, pumpkin, summer & winter squash and watermelon - To control aphids, cabbage looper, cucumber beetle (adults), cutworms, leafhoppers, leafminers, melonworm, pickleworm, plant bugs, squash bugs, ensure uniform coverage of plants. Do not make more than 8 applications per crop per season. Can be applied up to the day of harvest.

Eggplant - To control Colorado potato beetle, vegetable leaf miner, ensure uniform coverage of plants. Do not make more than 16 applications per season. Can be applied up to 3 days prior to harvest.

Horseradish - To control crucifer weevil, do not make more than 3 foliar applications per season. Can be applied up to 22 days prior to harvest.

Leafy Vegetables: amaranth, arugula, celery, celtuce, chervil, corn salad, chrysanthemum (edible-leaved and garland), cress (garden and upland), dandelion, dock, endive, fennel, lettuce (head and leaf), orach, parsley, purslane (garden and winter), rhubarb, spinach and Swiss chard - To control alfalfa looper, aphids, beet armyworm, cabbage looper, corn earworm, cutworms, European cornborer, fall armyworm, green cloverworm, southern armyworm, vegetable leaf miner, apply every 5 to 10 days as needed. Do not make more than 7 applications per crop per season. Can be applied up to 1 day prior to harvest.

Potatoes - To control beet armyworm, colorado potato beetle, potato beetle, potato leafhopper, potato aphid, potato tuberworm, cabbage looper, cutworms, European corn borer, potato psyllid, tarnished plant bug, do not make more than 12 applications per season. Can be applied up to 7 days prior to harvest.

Peppers - To control vegetable leafminer, cabbage looper, flea beetle, corn earworm, pepper weevil, European corn borer, do not make more than 8 applications per season. Can be applied up to 3 days prior to harvest.

Tomatoes (Do not apply on cherry tomatoes and varieties yielding tomatoes less than one inch in diameter.) - To control beet and southern armyworms, tomato pinworms, tomato fruitworms, hornworms, granulate cutworms, Colorado potato beetles, cabbage loopers, apply to plants for uniform coverage. Do not make more than 6 applications per season. Can be applied up to day of harvest.

IMPORTANT: READ BEFORE USE

Read the entire Directions for Use, Conditions, Disclaimer of Warranties and Limitations of Liability before using this product. If terms are not acceptable, return the unopened product container at once. To the extent consistent with applicable law, all such risk shall be assumed by the user or buyer.

CONDITIONS: The directions for use of this product are believed to be adequate and should be followed carefully. However, it is impossible to eliminate all risks associated with the use of this product. Ineffectiveness or other unintended consequences may result because of such factors as weather conditions, presence of other materials, or the manner of use or application, all of which are beyond the control of Southern Agricultural Insecticides, Inc. All such risks shall be assumed by the user or buyer.

DISCLAIMER OF WARRANTIES: To the extent consistent with applicable law, Southern Agricultural Insecticides, Inc. makes no other warranties, express or implied, or merchantability or of fitness for a particular purpose or otherwise, that extend beyond the statements made on this label. No agent of Southern Agricultural Insecticides, Inc. is authorized to make any warranties beyond those contained herein or to modify the warranties contained herein. Southern Agricultural Insecticides, Inc. disclaims any liability whatsoever for special, incidental or consequential damages resulting from the misuse or mishandling of this product.

LIMITATIONS OF LIABILITY: THE EXCLUSIVE REMEDY OF THE USER OR BUYER FOR ANY AND ALL LOSSES, INJURIES OR DAMAGES RESULTING FROM THE USE OR HANDLING OF THIS PRODUCT, WEATHER IN CONTRACT, WARRANTY, TORT, NEGLIGENCE, STRICT LIABILITY OR OTHERWISE, SHALL NOT EXCEED THE PURCHASE PRICE PAID, OR AT SOUTHERN AGRICULTURAL INSECTICIDES ELECTION, THE REPLACEMENT OF PRODUCT.

For product information email us at info@Southernag.com



EPA EST. NO. 829-FL-1 (3); 829-NC-1 (4); 829-NC-2 (5) Number following Est. No. corresponds to first digit in Lot No.

E. P. A. Reg. No. 829 -293

J4

25 lb.